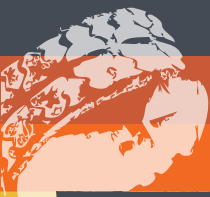


Galleries | Exhibitions | Gift Shop
Dudley's Den | Events

NORTH LINCOLNSHIRE
museum



Visitor Guide

Oswald Road, Scunthorpe DN15 7BD

Free Entry | Fully Accessible | Open Seven Days
Free parking | Courtyard Picnic Area

Welcome to NORTH LINCOLNSHIRE museum

A warm welcome awaits you in our reception. Visiting the Museum is like stepping back in time. Learn about the history of North Lincolnshire through fascinating hands-on displays and amazing objects and stories in our galleries and exhibitions. Plus, a programme of changing family friendly exhibitions and events for all ages. No visit is complete without a browse in our gift shop. Please check in advance to find out What's On the day you plan to visit (see page 6).



Page 2 / 3 **Welcome and Site Map**

Page 4 **Discover History**

Page 4 / 5 **Visiting Us**

Page 6 **Find out What's On**

Page 7 **Finds / Collections / Learning**

Page 8 **Fantastic for Families**

Page 9 **Accessible and Inclusive**

Page 10 **Contact information**



Toilets



Information



Buggy park



Stairs



Accessible toilet



Lift



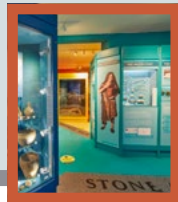
Baby changing



Shop



Level access lift



■ Display galleries

■ Exhibitions

■ Community space, available for hire

■ Dudley's Den, our dedicated space for under 5s

■ Outdoor



Discover the History of North Lincolnshire

Step back in time through our interactive hands on galleries. Learn more about the area's fascinating history.

Discover Articles on our website with images and/or video looking in-depth at themes.

Visit us

Planning your visit

You can look at our virtual tour online and our Bloomberg Connects free digital guide. Our guide takes you behind the scenes with information about our exhibitions, exclusive tours and look up information about items within the Collection. You can use the guide onsite or from home. Scan the QR code to start using.

Open

10am - 4pm, Monday to Saturday and 1pm - 4pm, Sunday.
Closed 24 December to 1 January.
Admission is FREE.

Address

We are on Oswald Road in Scunthorpe DN15 7BD .

Galleries include

- Jurassic Sea
- Steel Town
- Iron Stone Cottage
- Local History Gallery
- People's War Gallery
- Post War Gallery
- Archaeology Gallery

Free parking

A visitor car park is at the rear of the Museum on Vicarage Gardens.

what3words ref: jelly.fuel.paused

Buggy park

Secure your buggies in our courtyard buggy park while you look around the Museum.

CCTV

For the safety and security of visitors, staff and objects, CCTV is in operation at all times.



Shop

We aim to stock environmentally and responsibly sourced gifts that relate to the Museum. With as little plastic as possible.

We are not perfect, but we are working towards getting there. We have a range of fossil, dinosaur and exhibition related giftware starting at pocket money prices. Treat yourself or your little ones, and support the Museum.



Donations

Would you like to help us preserve the past for future generations to enjoy?

Arts and culture transform quality of life for individuals and communities. They are good for you!

Your generous donations help our Curatorial Team to care for and display the objects in the collection.

You can donate in the venue or online.

Food and drink

The Museum doesn't have a café on site; visitors are encouraged to bring a picnic to eat in the courtyard garden only. No food or drink is allowed to be consumed elsewhere in the building. This prevents spills, stains and pests, which is essential for the protection of the collections and the safety of visitors and staff.



What's on and further information

www.northlincolnshiremuseum.co.uk

Our website is constantly updated with everything you need to know about North Lincolnshire Museum. You can find out about our exhibitions, events, educational services and everything else we have to offer.

Our newsletter

To be the first to hear about news and events, sign up to the Museum newsletter: www.northlincolnshiremuseum.co.uk - **Join mailing list**

Join the conversation

We have accounts on the following social media channels.

Follow, like and share our posts, we'd love to hear from you.



Finds

The Finds Liaison Officer (FLO) for North Lincolnshire records archaeological finds made by members of the public, publishing them on the Portable Antiquities Scheme (PAS) website: www.finds.org.uk

If you are bringing a find, advance notice of your visit to see the Finds Liaison Officer is best.

Call the Museum:

01724 297055.

Email:

Martin.foreman@northlincs.gov.uk

Adam.daubney@northlincs.gov.uk

Collections

North Lincolnshire Museums' collection consists of approximately 400,000 objects.

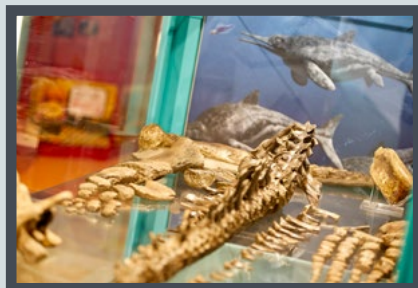
The Curatorial Team manages the changing exhibition programme, enquiries regarding collections, object identification, local history research, exhibitions co-produced with the community and donations via email at museum@northlincs.gov.uk or via the Contact Us form on the website.

Some of the material in the collection can now be explored on CollectionsOnline. New records are being added all the time.

www.northlincs-col.collectionsindex.com/home

Arts and Heritage Learning

We offer unique learning experiences to schools. Hands-on and engaging workshops at a range of cultural venues in North Lincolnshire. Opportunities are also available for outreach workshops at your school and teacher CPD sessions. For more information contact: **01724 296039** or email: artsandheritagelearning@northlincs.gov.uk



Fantastic for families



Our website has all the information you need to plan your visit: What's on, Visitor Guide, Visual Story and Virtual Tour, and information on getting to the Museum.

Dudley's Den

Explore, play, pretend and discover in our space for children under five. Play, read and handle objects in the Museum wall. Babies can chill in the Under the Sea themed area.

Dudley Discovers - Make and Take

Saturdays 10.30am – 3.30pm
and Sundays 1.30pm – 3.30pm
and bank holidays.

Free, fun themed activities that explore our collections, suitable for all ages. No need to book.

Museum Minis

During term time.

Take part in fun, hands on activities designed for you and your little ones to play and learn together. Sessions are free and suitable for children under five. No need to book. See website for dates and times.



Facilities

- Courtyard Garden – outdoor area for picnics.
 - Toilets with baby change.
 - Buggy Park.
 - Free, themed trails around the Museum.
 - Interactives accompanying exhibitions to keep children entertained.
 - Lift to all floors.
 - Family events.
 - Pop up activities.
 - Talks and workshops.
- ★ Visit England Quality Assured Visitor Attraction.
 - ★ Winner of the Destination Lincolnshire Small Visitor Attraction of the Year 2024/25.



Accessible and inclusive

Pre-visit

Our website has all the information you need to plan your visit, a detailed Access Guide, a Visual Story, a Virtual Tour, Sensory Map, listing on Euan's Guide.

Visit

A warm welcome from trained staff.

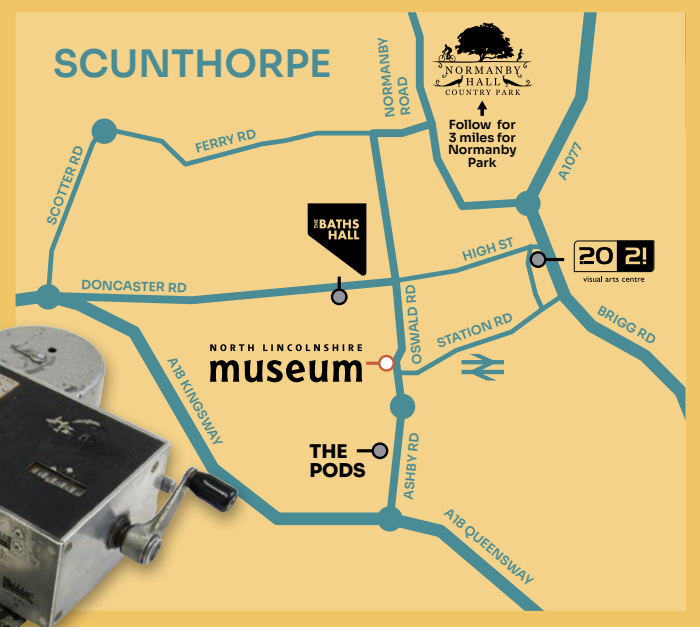
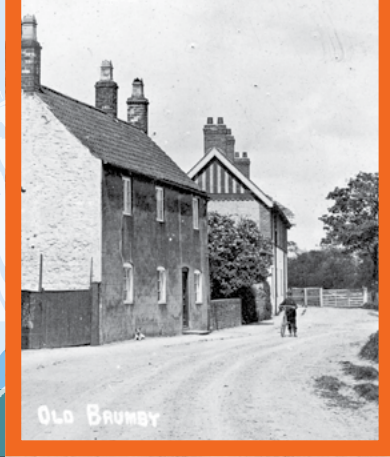
Staff receive the following training: Equality in the Workplace, Safeguarding Adults Awareness, Safeguarding Children Awareness, Dementia Friends, Understanding Autism, Learning Disability Awareness and First Aid Training.



Facilities

- Free car parking and two accessible bays.
 - Small accessible toilet and baby change.
 - Lift to first floor and short access platform lift.
 - Aids for blind/visually impaired visitors and deaf, deafened or hard of hearing and Neurodiverse visitors.
 - Sensory backpacks and sensory maps.
 - We welcome assistance dogs and have an area where they can be exercised and toileted.
 - Emergency evacuation procedures for visitors with disabilities.
 - Additional seating, coloured overlays.
 - Open seven days a week.
-
- ★ Winner of the Destination Lincolnshire Accessible and Inclusive Tourism Award 2024/25
 - ★ Visit England Quality Assured Visitor Attraction
 - ★ Winner of the Destination Lincolnshire Small Visitor Attraction of the Year 2024/25
 - ★ National Autistic Society Autism Friendly Award 2025





Supported using public funding by
ARTS COUNCIL ENGLAND

North Lincolnshire Council



☎ 01724 297055 ✉ museum@northlincs.gov.uk