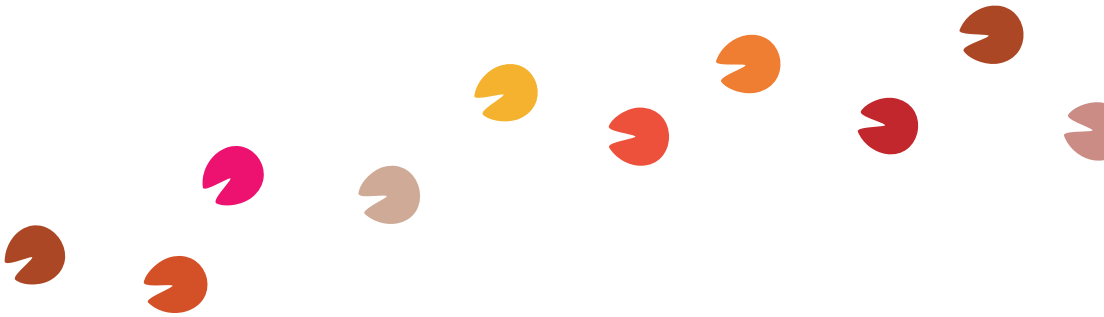


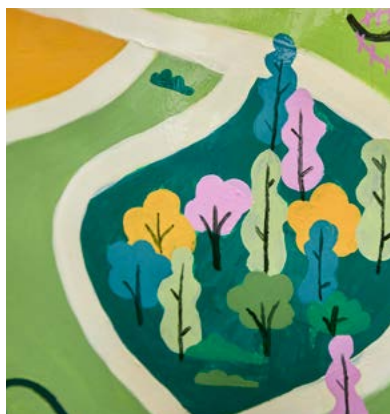


Horsing Around

A Sculpture Trail around North Lincolnshire



Trail Guide



Giddy Up Let's Go

Welcome to the
official guide for

Horsing Around: A Sculpture Trail Around North Lincolnshire.

Use this guide to find all 20 of the horse sculptures around North Lincolnshire and Normanby Hall Country Park. Every horse has been lovingly decorated by an artist. Each artist has worked with a school or community group to bring their horse to life!

Why horses?

The Horsing Around trail is one of many events celebrating the 300th anniversary of the birth of artist George Stubbs. Stubbs, famous for his paintings of animals particularly horses, spent time living and working in Horkstow in North Lincolnshire. While at Horkstow he undertook much of the work towards his book, *The Anatomy of the Horse*. Two of his great patrons were Sir Henry and Lady Nelthorpe of Baysgarth House, Barton Upon Humber, North Lincolnshire. He completed a double portrait of the Nelthorpe's in 1746. Today, his paintings feature in gallery collections, including his painting *Whistlejacket* which is in the collection of the National Gallery, London.

Enjoying the ride? We want to know!

Have you seen the Horsing Around sculptures around North Lincolnshire and in the grounds of Normanby Hall Country Park? *We would love to know!*

Keep us up to date with which horses you've seen by tagging [@northlincsmuseum](https://www.instagram.com/northlincsmuseum) and using our [#hashtag #HorsingAroundNL](https://www.instagram.com/hashtag/HorsingAroundNL)

These magnificent creatures would not have been possible without the skills and time of our artists and community partners. Please use this booklet to credit them, too!

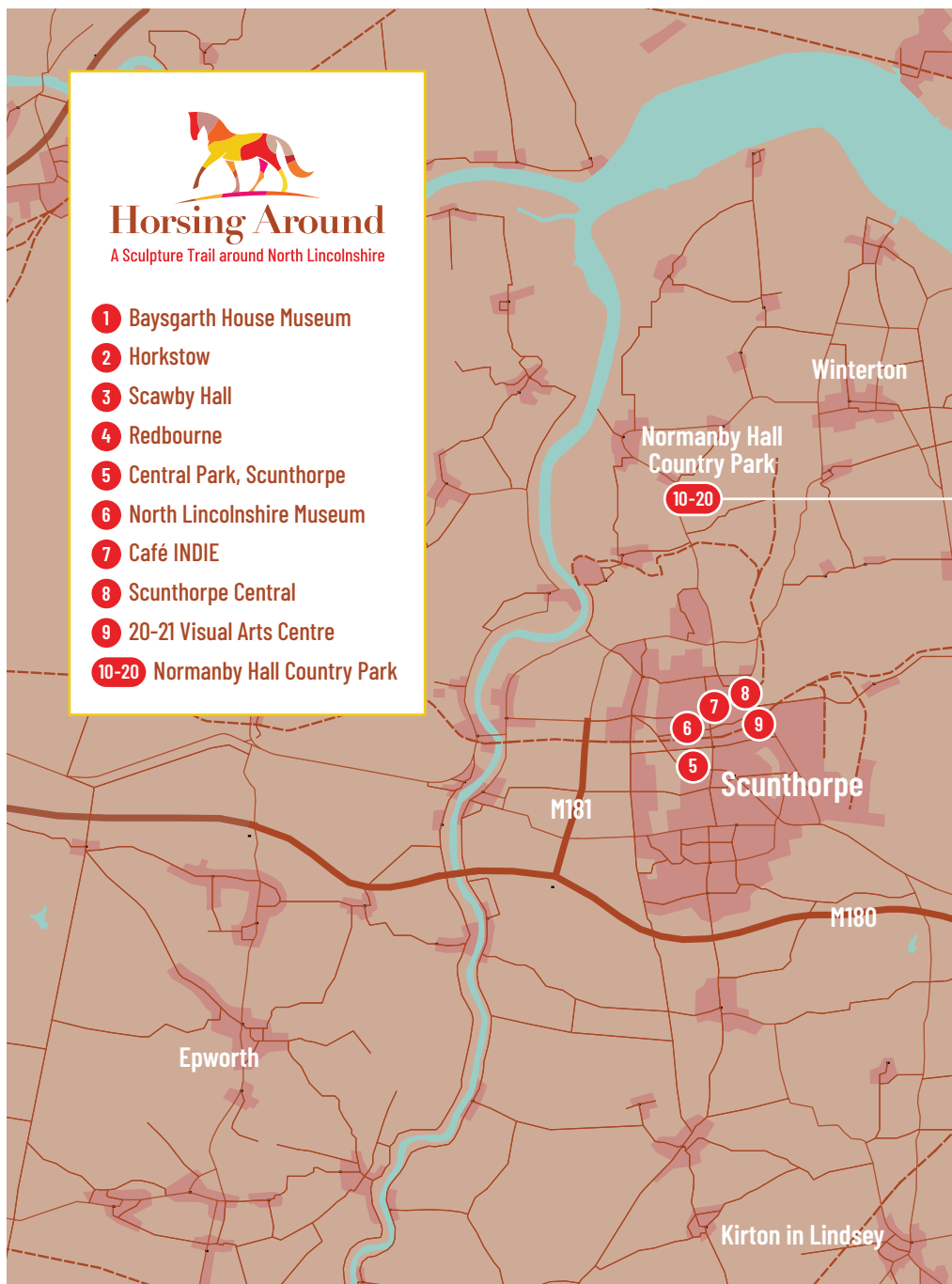




Horsing Around

A Sculpture Trail around North Lincolnshire

- 1 Baysgarth House Museum
- 2 Horkstow
- 3 Scawby Hall
- 4 Redbourne
- 5 Central Park, Scunthorpe
- 6 North Lincolnshire Museum
- 7 Café INDIE
- 8 Scunthorpe Central
- 9 20-21 Visual Arts Centre
- 10-20 Normanby Hall Country Park





Caitlin Smith

@caitlinsmith_art

Caitlin is a Hull based artist working in sculpture and installation. Her practice is very studio driven. She often experiments using various materials, found objects and colour.

Caitlin is fascinated by the functionality of the human body and resonates to George Stubbs's interests in anatomy. This design is inspired by George Stubbs's time in Hull and his passion with anatomy of animals, particularly horses. The colours are influenced by Stubbs's painting - Lord Grosvenor's Sweet William in a Landscape, 1779. This connects to his work with dissecting horses to Hull Mosaics and reflects his life through the pieces and colours.

with St Peter & St Paul Church of England Primary School

We wanted to be involved in Horsing Around because we love art and wanted to learn something new. We enjoyed how peaceful the activity was and we came out feeling calm and inspired to do more artwork at home. Pupils involved: Irmak, Isabella, Alice, Eva, Isla Bleu and Ivy.



1

Skyscraper Acrylic on fibreglass Caitlin Smith

Jane Johansson

@janejohansson_art

Just as Stubbs revealed the horse's physical anatomy in his dissections, Spirit delves into the horse's emotional anatomy.

Horses, as sentient beings, possess an empathetic ability to process and mirror emotions. They amplify our joy, absorb our grief, feel our pain, and react to our fear. They respond to our kindness and frustration, carrying these emotions in their bodies as we do. The sculpture's layers are embedded with an emotional code, featuring over 50 words inscribed on its surface.

with Scunthorpe Museum Society Art Group

The Scunthorpe Museum Society Art Group meets twice a week at St Hugh's Church Hall, Ashby Road, Scunthorpe. The group is untutored but benefits from a programme of challenges, workshops and organised social events. Members work in whatever medium they choose and on subjects that inspire them. We were delighted to be paired with Jane Johansson and enjoyed sharing our feelings about horses at her inspirational workshop, the results of which are so cleverly here to see.

Find our group on Facebook: Scunthorpe Museum Art Group



Michael Burkitt

michaelburkitt.com

@michael_burkitt

Michael Burkitt's work is optimistic, creating room for romance, failure, repetition, labour, humour and love. Michael looks to make meaningful connections with audiences or individuals with stories, ideas, objects, films and performances. In this work he represents every single person in North Lincolnshire with a single handmade mark, so we can see each other, all together. The base colour was mixed and chosen to represent North Lincolnshire by fountain arts community group and is inspired by the glow of the steelworks in the sky when slag heaps are tipped.

Fountain Arts CiC

Fountain arts CiC is a creative arts project for everyone. Our aim is to increase arts engagement in North Lincolnshire by using unused spaces for projects, studios and learning. As part of a colour theory workshop, 12 creative people from the community created a colour palette which reflected North Lincolnshire. HEX #c77128 was selected as a representation of North Lincolnshire's agricultural past, corrosion of iron and the orange glow of the tipping slag heaps at Scunthorpe steelworks.



3

172,748 (Population of North Lincolnshire)

Emulsion and paint pen Michael Burkitt

Magda Wojtas

@magda_wojtas_art

Magda's work is highly influenced by global warming; microplastics can cause abnormal behaviour within aquatic life. The visual stimulation explores transpersonal psychology through connection to marine life and collective consciousness. The aim is to explore a peaceful way of protesting through pattern and colour. We held a workshop to encourage young pupils to reevaluate their respect for nature by thinking about their favourite seaside memories. By attaching pleasant feelings towards the ocean, one has more capacity to respect and protect it.

Oasis Academy Parkwood

Oasis Academy Parkwood believes every child can flourish. We are an enthusiastic, enriching, and secure community environment where all are respected and valued. We are excited to be part of the Horsing Around project. It's a unique experience to work with a local, talented artist. The children used boards, sand, paint and seashells in Magda's workshop. They had the freedom to create whatever they chose. They took inspiration from their own experiences alongside their learning from their art lessons. We were impressed with their creativity, skills and enthusiasm and look forward to everyone enjoying their work.



Rebecca Ellis

@artist_rebeccaellis

For as long as I can remember, pattern has influenced my work. My love of pattern continued as I explored mixed media in 2022, incorporating wallpapers into my landscapes. In the workshop with Oasis Academy Henderson Avenue, we worked on creating our own individual patterns inspired by nature. These all became a field patch in this patchwork horse. The patchwork fields are topped with a "Sunny Scunny" sunset sky. A pop of bright colour (I can't resist!) and a tribute to the big skies we get to experience living in North Lincolnshire.

Oasis Academy Henderson Avenue

As an inclusive Academy for children aged between 4 and 11, we are committed to delivering first-class education and playing an active role in the local community. We were really excited to be asked to be part of Horsing Around! As part of the workshop, our art club looked at pattern designs. We drew on natural inspirations such as bees, butterflies and flowers. Our designs have then been incorporated into the patterns on the horse in Central Park.



5

Molly Long Legs: The Patchwork Horse

Acrylic and gold leaf on fibreglass Rebecca Ellis

Angela Gordon

As a lifelong lover of horses, I am very excited to take part in the Horsing Around project. My horse explores the timeless bond between humans and horses. This special relationship has long been expressed in art. The earliest visual depictions of horses are found on the walls of prehistoric caves. The vivid imagery, portrayed in rich earthy pigments, are the basis for my design. The hand outlines, also found in cave art, represent the enduring connection between humans and horses - a relationship characterized by companionship, trust, and mutual respect.

with the Museum Makers

Museum Makers is a place for individuals with a disability to meet, socialise and explore history. We advise North Lincolnshire Museum on accessibility and curated the Museum Makers exhibition in 2023 which responded to objects in the museum's collection. Angela's workshop was fun, and we were excited to be involved in the design of the horse sculpture outside North Lincolnshire Museum. The handprints that you see on the sculpture are our hands. Angela showed us techniques which Prehistoric artists may have used. We really challenged ourselves to get involved and make a mess.



Neil Ward

@neiluswardus1

I never played truant on periods which included double art lessons. My earliest memories of enjoying art were drawing Egyptian tombs, Roman soldiers and Vikings longships. While studying painting and decorating at college I learnt signwriting, wood graining and marbling. In adulthood, work has involved the application of paints but on domestic, construction, offshore and nuclear surfaces. Another passion of mine is history. North Lincolnshire is steeped in Viking influences. Scunthorpe translates as Skuma's homestead. Normanby Hall, means north men's farmstead. The sculpture shows techniques learnt early in my career and combines them with a love of the past.

Café INDIE Youth Group

@cafe_indie

Café INDIE is not-for profit Co-operative café, live music and performance venue. Our ethos revolves around supporting young people aged 13 – 25 in our community. Whether that's through our youth groups, volunteering programme or our young people taking the reins themselves in our music development programme. Neil worked with our youth group to produce Viking designs on our horse sculpture. Designs on this horse were inspired by Theo, Jasmine, Finn, Leif and Rudy.



Robin Stones

@deadrobinart

What George Stubb's represents to me, as a transgender, working class person from Scunthorpe is at odds with what he represents in the artistic canon. To me, he signifies elitism and an obscuring of Britain's colonial past. I saw this as an opportunity to disrupt and subvert our historical narrative. Combining a valuable aspect of heritage, pottery, with designs in Pride colours creates a playful celebration of the queer community. We have always been here.

"It's so nice to see an older trans person doing things - it just gives me hope, you know?"

Rainbow Youth Member

Rainbow Youth

Rainbow Youth is a group of young people, many of whom identify as LGBTQIA+. Rainbow Youth meets monthly at 20-21 Visual Arts Centre and is run by team members of Scunthorpe Pride. The group is a safe space for young people to be themselves. We really enjoyed working with Robin, who encouraged us to channel our emotions into creativity by decorating pottery with things which make us angry. We then ceremoniously smashed our pottery creations; letting go of our negative emotions.



Julie Oxenforth

@oxenforth

Julie Oxenforth makes mixed media artwork that both challenges and inspires joy. She combines painting and construction with found objects, creating installations that invite play, interaction and contemplation. Oxenforth's task has been to produce a cohesive whole from the designs and mark-making of the Get Crafty participants, input from and relevance to her own creative process, while referencing George Stubb's life in Lincolnshire. The group looked at the subject of horse and human collaboration, how we treat horses, their symbolism and how their qualities are reflected in our lives.

with Get Crafty

Get Crafty are a group of adults with a disability who meet at 20-21 Visual Arts Centre every Wednesday. Focused on arts and crafts, Get Crafty have developed a series of exhibitions, including Pushing the Boundaries... Breaking the Mould and Legendaries. Julie Oxenforth encouraged individuals to create artworks using mark making in various mediums. These were then dissected and rearranged and the group constructed new designs by contrasting and complementing patterns and marks. This sculpture represents each person's work in one cohesive and collaborative design.



Reginald Swinney

@reginald_swinney

reginaldswinneyillustration.com

lemonadeillustration.com

Reginald Swinney is a freelance illustrator, currently represented by Lemonade Illustration agency. He works digitally, producing vector-based illustrations for a wide variety of genres. The majority of his work is focusing on activity books, work sheets and educational resources for children. He has produced this interactive, stylised map of Normanby Hall Country Park. Why not follow the paths, with your finger, to find your way through the maze and get to the horse.

St. Bernadette's Catholic Voluntary Academy

St. Bernadette's Catholic Primary Voluntary Academy offers a rich and wholesome education for 3-11 year old children. We are passionate about inspiring children with the joy of learning and creativity. As part of our workshop with Reginald Swinney we chose the colours you can see on this amazing map!



Undici Venetian aka Tom Butcher

I am a Graffiti artist and Venetian plasterer based in North Lincolnshire. Heavily influenced by textures and natural decay of materials, I've tried to blend a combination of copper Verdigris, steel and natural oxidation within this piece. A nod to Scunthorpe's industrial heritage. This work was guided by the brilliant young people of Althorpe and Keadby Primary School!

Althorpe and Keadby Primary School

Our school wanted to be involved because we are proud of our local area. It's such an exciting project to be a part of, particularly because we love anything creative and are passionate about inspiring adventures in our children. Highlights from the children included: "We enjoyed choosing the textures". "It was a flexible project and it was fun". "We were part of the design and got to draw the horse and label it". Pupils involved: Lilly Broadbent, Leo Couch, Yasmine Couch, Jack Taylor, Isaac Hopkins and Lexi Dixon.



Mary Blackshaw

@maryblackshaw

I am 'BaaBaa Blackshaw' otherwise known as Mary, a children's illustrator. My inspiration comes from outsider art and folklore. Inhabiting a space between humour and storytelling. I work with natural and modern materials, creating inks, paints, and photoshop. Before moving to Oxfordshire, Alkborough was my home. North Lincolnshire has a special connection for me. Working with North Lincolnshire Sanctuary Group was such a warm and friendly experience. I have incorporated their beautiful linocut images into the folk history from the area. It is a homage to how local stories adapt, celebrating what was and what will be.

with North Lincolnshire Sanctuary Group

<https://northlincolnshire.cityofsanctuary.org>

We are a community based group of volunteers who offer befriending and support to Refugees, Asylum Seekers and all seeking refuge in North Lincolnshire. North Lincolnshire Sanctuary Group is part of a national network called City of Sanctuary. Mary worked with a group of women from many different countries, who meet every Thursday morning. In Mary's lino print workshop the group made stamps and prints of things which are important to them – wheat, the mosque, flowers and mandala and mehndi patterns. Contact us via northlincssanctuarygroup@gmail.com.



Dancing Tiger Scrapstore

@thedancingtiger_scrapstore

We are Lillie and Lucy from Dancing Tiger Scrapstore. We are a Community Interest Company which takes scrap and surplus items from businesses and repurposes them as art resources. Originally we planned to use flowers shapes cut from discarded crisp packets in our design, but we couldn't make them stick! So, never ones to be beaten, we used other resources from our scrapstore instead. We loved working with the children at Crosby Primary school and hope we inspired them with our workshop on colour theory.

Crosby Primary School

Our school is a wonderful, unique school with a diverse mix of cultures and faiths. Our environment is rooted in mutual respect, where our children celebrate their differences. We were keen to be part of the Horsing Around sculpture trail. Our children find great joy in expressing themselves through their artwork. It is great to be able to take this beyond the school grounds. During the workshop, the children learnt about the colour wheel and looked at Mondrian squares.



Karen Webb-Meek

@dolliejewellery

Karen Webb-Meek has been an artist, illustrator and designer for over 30 years. She has worked on hundreds of projects, large and small, and is a jewellery designer based in Cleethorpes. Karen gained an HNC in Graphic Design at Farnborough, an illustration degree from Lincoln and a Masters in illustration from Cambridge School of Art. The horse is an illustrative artwork of native flora and fauna of North Lincolnshire as well as scenes of landmarks around the county. Karen lives, works on the Lincolnshire coast, and is inspired by the Lincolnshire countryside and coastline.

with Willoughby Road Primary Academy

At Willoughby Road Primary Academy, we are always looking at ways of giving our children different opportunities. We are keen to involve ourselves in the local community. We are excited to take part in the Horsing Around project as we have many passionate, budding artists. The workshop was a wonderful experience. Pupils from Reception to Year 6 worked together with the artist, Karen Webb-Meek. They created imaginative line drawings inspired by flowers and animals from Lincolnshire. Karen even selected some designs to use in her final design for the horse!



14

Pumpkin: The Doodle Horse

Acrylic and gold paint pen Karen Webb-Meek

Sarah Allen

@sarah_allen.art

I wanted to explore the landscapes capacity for mindfulness. Working with Autism Peer Support made me realise that this is not the case for everyone. For some, especially those who are neurodivergent, the world can be a place of discomfort and dysregulation. I challenged myself to 'destroy' elements of my final piece to communicate this. We expressed our feelings through visual arts and writing. We meditated together before putting ideas on paper instinctively, leading to much discussion about creativity, autism, and mental health.

with Autism Peer Support organiser, Marc Device and poet, Steven James Parkins

The Autism Peer Support Group is a monthly social space, supported by the kind people at Cafe Indie. It is a space for autistic adults to meet and talk about all aspects of life as an autistic person, without judgement and without needing to mask. Art allows us to make sense of feelings. It is such a valuable tool to both neutralise life's poison and celebrate its joys. Sarah listened without criticism. 'I really enjoyed the session, and feel in some ways, I may remember the whole thing as the beginning of me starting to feel closer to the world'.



15

Rabbit Seizing a Horse

Acrylic on fibreglass Sarah Allen

Charlotte Portier-Tock

@charlotteptillustration
www.cptillustration.com

I am an illustrator that works in traditional and digital media. I have a particular interest in photographing and creating art inspired by plants, insects and animals. The horse has is covered in a dark green base to allow the vibrant colours of the intricately painted flowers and insects to bloom alongside the lighter green tones of the textured mane and tail, reminiscent of long flowing grass. Many of the flora and fauna can be found within the gardens and woodland area of Normanby Hall Country Park.

Outwood Academy Foxhills

Our students really enjoyed Charlotte's workshop where we experimented with placement and looked at developing a natural forms piece. They really got a lot out of the new techniques that Charlotte showed them with the fan brushes, and I am sure they will continue to use these as they progress throughout their GCSE. Thank you so much for coming to see us!



Lucy Bryant

@ArlyBoBarly
maae.artstation.com

I am a passionate hobby artist whose work reflects a deep love for flora, fauna, and equine anatomy. I am fascinated by taxidermy. I balance the natural world, botanical illustrations and animal anatomy, particularly horses. Self-taught and inspired by native British flora, I hope you can enjoy this piece situated within the beauty of nature.

with Scunthorpe 16th Scouts

Our Scout and Explorer group is made up of young people aged 10½ to 18 years old. We support our young people in their personal development, encouraging them to take on different challenges and contribute to their community. In the summer, we love to meet outdoors at a local woodland. We gathered flora and fauna from the campsite which is the inspiration for the designs on the sculpture. You can find out more about Scouting at www.scouts.org.uk.



Joanne Botterill

@joanne_elizabeth_artist

Joanne is a full-time artist and seamstress working from her home studio in Wragby, Lincolnshire. She is extremely interested in the natural world and how both flora and fauna can be incorporated into her art and clothing design. The design for her horse borrows from the gardens and woodland surrounding Normanby Hall. Autumnal palettes show the beauty of nature's abundance of colour even when it is dying. The fun that can be had kicking up leaves in your wellies and the sound of them curling in the wind.

Outwood Academy Brumby

We are a welcoming and supportive academy, with a relentless determination to provide the very best education for every child. We wanted to be involved in the Horsing Around sculpture trail because of our school's name, Brumby, is also a type of horse!



18

Whistlejacket

Acrylic paint and pen on fibreglass Joanne Botterill

Lois Pittman

loispittman1.wixsite.com/meiko

My design draws on the Swedish folk tradition of the Dala horse. Over 4,000 years ago in Dalarna a region of Sweden, wild Dala horses were tamed and became domesticated. In the 1700's little wooden horses were carved from pine wood and sold at markets as toys. At this time Stubbs was making his anatomical drawings of horses in North Lincolnshire. The Dala horse is a treasured object and represents Strength, Courage and Happiness. Some believe they bring good luck to one's endeavours. A bright beacon of hope to charm and delight everyone in our community!

with John Harrison CE Primary School

We offer our children a range of inspirational activities to enable them to be aspirational about their future. Our children relish opportunities to work with local artists to design lasting pieces of artwork, but to also raise money to support local charities. They take a real pride in contributing to society. The children learnt about how to use different painting techniques to create a range of patterns inspired by nature. In the words of one child, 'it was amazing'.



Dahlia Lee

@allypallyarts

Growing up in rural Lincolnshire, my life-long love of the countryside and nature has always influenced my artwork. My passion for wildflowers was inherited from my Granny Winifred, who tended her garden with a green fingered magic. Her beautiful pressed flower pictures still play in my mind while I work. The name of this horse, Whinny, is a little nod in her direction. I hope my artwork will nurture an awareness of the beauty and vital importance of the often unappreciated familiar plants and wildlife around us. You can find me in my studio and delivering workshop at [@elbowroomlincoln](#).

with the Ukrainian Saturday School

The Ukrainian Saturday school is an informal group of Ukrainian families. Our workshop with Dahlia was centred around elements of the natural world that are important to us. We each created a sketchbook of plants and creatures; some we see locally and others we see in Ukraine. We had great conversations about our memories, swapped folklore and stories. We'd like to draw your attention to the guelder rose, the national flower of Ukraine, which can be found throughout our folklore, in songs, poetry and art.



Follow us...

North Lincolnshire Museum

Follow us on:

X @Northlincmuseum

Instagram @northlincsmuseum

Facebook @northlincsmuseum

Normanby Hall Country Park

Follow us on:

X @normanbyhall

Instagram @normanbyhall

Facebook @normabyhall

Don't forget to keep us up to date by using the hashtag

#HorsingAroundNL







Horsing Around

A Sculpture Trail around North Lincolnshire

NORTH LINCOLNSHIRE
museum



HM Government



**North
Lincolnshire
Council**



Supported using public funding by
**ARTS COUNCIL
ENGLAND**



Made possible with

**Heritage
Fund**

