

North Lincolnshire Museum

A Visual Story for Schools

You can take a virtual tour of our site by scanning the QR code or going to the link below.



<https://northlincolnshiremuseum.co.uk/discover/virtual-tour/>

For information on accessibility scan the QR code or go to the link below.



<http://northlincolnshiremuseum.co.uk/accessibility/>

Arriving at the Museum

The main entrance is on Oswald Road. The Museum opens at 10 a.m. If your school arrives before that time, you might have to wait outside for a while.



Museum entrance



When you walk in, you will see the shop and reception area. A member of the team will say hello when you arrive.



You will see a skeleton of the Winterton Lady near the entrance.

Facilities



This is where our toilets are too. We have male, female and accessible toilets. We have paper towels if you don't like using the hand dryer.



You may need to use our lift. One of the Museum team will help you to use it.

People at the Museum



Staff at the Museum wear black shirts that say North Lincolnshire Museum. They are here to help you enjoy your visit.



The Learning Team will deliver your workshop. They might be wearing special clothes for your workshop so you can imagine what life was like a long time ago.

Meet the team



Helen



Jen

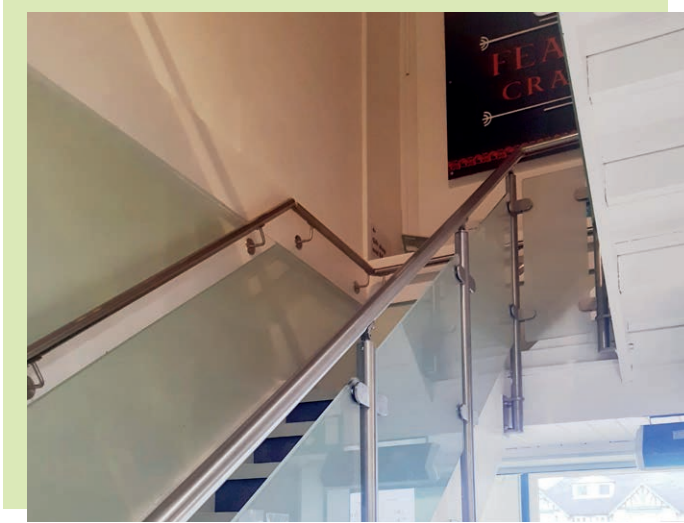


Liz



Georgie

Your classroom



Your workshop will take place upstairs.
Please hold the banister as you go up.



You will walk through our Main Gallery
to the Community Gallery, where you
will do most of your workshop. The
room might be set up differently for
your learning.

Your classroom



You will leave your coats and bags at the back of the room. You can leave them here for your entire visit.



If you are having lunch at the Museum, you will eat in the Community Gallery. You can use the sink to wash your hands before you eat.

Calm spaces

If you need a break, you might like to spend time in these spaces with an adult. They are all public spaces, so others may be using them at the same time.



Dudley's Den is an area for the under 5's, so you may meet some little people here. You are welcome to use our sensory equipment, no matter your age. It's on the ground floor.



If you need fresh air, we have tables and chairs in the **Courtyard**. The door is near the entrance.



There is a dark space in the **Anderson Shelter** in the People's War Gallery. However, there are lots of noises, like sirens, in here too. It's on the ground floor.

Things you might see



Darker places



Local History



Anderson Shelter

Lighter places



Dudley's Den



Courtyard

Things you might touch



You can touch lots of our objects.



There are lots of things in the Ironstone Cottage.



In some areas, you can play and dress up.

Things you might hear



Walkie-talkies.



Music from the record player.



Other people enjoying the Museum.



Sirens near the Anderson Shelter.

Leaving the Museum



When you finish, you will need to collect your coat and bags from the Community Gallery.



You will leave through the same door you arrived through.

We hope you had a brilliant time and will visit us again!